



# Events throughout Cumbria 2007

- |   |   |
|---|---|
| 16 - 17 Jun . . . . Silloth Vintage Rally on The Green                        | 25 & 27 Aug . . . . Cartmel Races, Cartmel                            |
| 02 - 08 Jul . . . . Coniston Water Festival, Coniston                         | 25 - 26 Aug . . . . Solfest at Tarns                                  |
| 07 Jul . . . . . Kirkland Festival, Kendal                                    | 25 - 27 Aug . . . . Solfest, Silloth                                  |
| 13 - 15 Jul . . . . Furness Tradition Folk Festival, Ulverston                | 27 Aug . . . . . Silloth Carnival Day                                 |
| 14 - 15 Jul . . . . Millom & Haverigg Scarecrow Festival, Millom              | 24 Aug - 09 Sep Sedbergh Festival of Books & Drama, Sedbergh          |
| 14 - 15 Jul . . . . Lakeland Rose Show, Crooklands, near Kendal               | 26 Aug . . . . . Grasmere Lakeland Sports & Show, Grasmere            |
| 19 Jul . . . . . Cartmel Races, Cartmel                                       | 27 Aug . . . . . Keswick Agricultural Show, Keswick                   |
| 20 - 22 Jul . . . . Brampton Live, Brampton                                   | 30 Aug . . . . . Crosby Ravensworth Agricultural Show, near Shap      |
| 21 Jul . . . . . Cumberland County Show, near Carlisle                        | 31 Aug - 02 Sep Kendal International Street Arts Festival, Kendal     |
| 21 Jul . . . . . Penrith Show, Penrith  | 01 Sep . . . . . Alston Agricultural Show, Alston                     |
| 25 Jul . . . . . North Lonsdale Agricultural Show, Ulverston                  | 01 Sep . . . . . Hesket Newmarket Agricultural Show, Hesket Newmarket |
| 26 Jul . . . . . Ambleside Traditional Lakeland Sports, Ambleside             | 06 - 09 Sep . . . . Silloth Music & Beer Festival, Silloth            |
| 27 - 29 Jul . . . . Maryport Bitter & Blues Festival, Maryport                | 13 Sep . . . . . Westmorland County Show, Crooklands, near Kendal     |
| 27 - 29 Jul . . . . Potfest in the Park, near Penrith                         | 14 Sep . . . . . Kendal Torchlight Carnival, Kendal                   |
| 28 - 29 Jul . . . . Cumbria Steam Gathering, Flookburgh                       | 14 - 15 Sep . . . . Egremont Crab Fair & Sports, Egremont             |
| 28 - 29 Jul . . . . Silloth Kite Festival on The Green                        | 15 Sep . . . . . Ulverston Lantern Procession, Ulverston              |
| 01 Aug . . . . . Cartmel Agricultural Show, Cartmel                           | 15 Sep . . . . . 'Kendal Alight' Street Arts Festival, Kendal         |
| 03 - 05 Aug . . . . Potfest in the Pens, near Penrith                         | 16 Sep . . . . . Borrowdale Shepherds' Meet & Show, Borrowdale        |
| 05 Aug . . . . . Food Festival on The Green, Silloth                          | 28 - 30 Sep . . . . Coniston Walking Festival, Coniston               |
| 03 - 19 Aug . . . . Lake District Summer Music Festival, Countywide           | 29 Sep . . . . . Eskdale Show, Eskdale                                |
| 03 - 05 Aug . . . . Lowther Horse Driving Trials & Country Fair, near Penrith | 13 Oct . . . . . Wasdale Head Shepherds' Meet & Show, Wasdale         |
| 04 Aug . . . . . Cockermouth & District Agricultural Show, Cockermouth        | 14 Oct . . . . . Apple Day, Acorn Bank, near Penrith                  |
| 11 Aug . . . . . Dalston Show, Dalston  | 22 - 28 Oct . . . . Muncaster Halloween Week, Ravenglass              |
| 18 Aug . . . . . Skelton Show, near Penrith                                   | 09 - 18 Nov . . . . Kendal Mountain Film & Book Festival, Kendal      |
| 21 Aug . . . . . Hawkshead Agricultural Show, Hawkshead                       | 24 - 25 Nov . . . . Grasmere Festival of Stars, Grasmere              |
| 25 Aug . . . . . Dufton Agricultural & Sheepdog Show, near Appleby            | 24 - 25 Nov . . . . Ulverston Dickensian Christmas Festival           |
| 25 Aug . . . . . Millom & Broughton Agricultural Show, Millom                 | 02 Dec . . . . . Keswick Victorian Fair, Keswick                      |



# Signpost

Summer 2007 Edition

## Group Travel Tours in Cumbria

## Welcome

Welcome to the Summer edition of Signpost, the Group Travel newsletter from Cumbria - The Lake District.

Thank you to everyone who responded to the questionnaire enclosed in the Spring edition of Signpost, your comments were very helpful to us and we are now looking into the possibility of producing an e-version of some Signpost issues. Thoughts are now naturally moving to new and exciting trips for Summer, so what better way to spend it than a tour of the beautiful Solway Coast. There is literally so much to do in West Cumbria, from a visit to Bank Mill Nursery and the Lake District Coast Aquarium, Maryport - to the fascinating RAF Museum at Millom. You just won't believe why you haven't visited this part of Cumbria before! K Village Outlet Centre has temporarily relocated to the centre of Kendal and are offering special incentive vouchers for coach passengers. If you're thinking of something amazing and new, why not try the World in Miniature Museum at Haughton Hall, Carlisle. And don't forget to check out all the great offers in the News Update section. Finally, if you haven't already ordered a set of our FREE group travel guides for Cumbria, please complete the enclosed postcard and we will send you a set of the new guides by return of post.

I hope to see you soon! And of course, if you have any questions or need any help, please get in touch.

Happy Touring!

**Cherie Fox**  
Group Travel Help Desk, Cumbria Tourism

Coming to the Lakes in 2007/08 for at least 2 nights?

Fancy a FREE day's Blue Badge Guiding as part of your tour?



Well good news then, as Cumbria - The Lake District's Free Blue Badge Guide promotion is still going strong. This promotion has been hugely popular to date, so if you've never taken advantage of it, here's your chance. Your tour will get something extra to help sell it and your customers will get a little something extra and return home with happy memories! To qualify you must be staying two nights in the county and not have used the offer before!

For more details contact Cherie on 01539 825015.



**CLAIM YOUR FREE BLUE BADGE GUIDE TODAY!**

If you would like a free booklet with over 100 Cumbrian events and festivals listed for 2007, please email your request to the Help Desk's email at the bottom of the page or log on to [www.cumbria4coaches.com](http://www.cumbria4coaches.com) for a complete events listing.



# Three good reasons for a trip along the Solway Coast

Plan a day trip along the Solway Coast to awaken your senses and revive your spirit. It is an oasis of calm compared to the bustle of the central Lakes, but still has lots to offer. Call in at Maryport and the Lake District Coast Aquarium, travel along the stunning coastline to Silloth and visit Bank Mill Nursery en route or on the way home.



Maryport has historical Roman connections, but one of the busiest attractions now, is the **Lake District Coast Aquarium** - it celebrates its 10th birthday this year. You can see the fish being fed, touch the rays and starfish and enjoy lunch in the harbour café. The food is delicious and the café commands great views across the harbour. There are special offers for coach drivers and parties;

dropping off and parking are very easy and visitors can look round the Aquarium or just enjoy the gift shop and café.

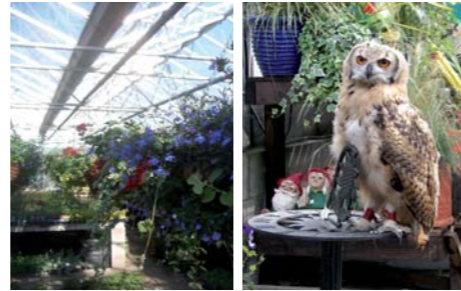
[www.lakedistrict-coastaquarium.co.uk](http://www.lakedistrict-coastaquarium.co.uk)  
t: 01900 817 760



The journey to **Silloth** is only 30 minutes with breathtaking scenery and stunning costal views across to Dumfries and Galloway. The whole area has been designated 'An Area of Outstanding Natural Beauty' and what's more, you won't find queues of traffic and lots of people, just wildlife, nature and fresh air!

Silloth has one of the lowest rainfalls in the UK and a visit is like stepping back in time. Once a bustling Victorian holiday resort, now a quieter, well manicured destination retaining all the charm of the Victorian era - cobbled streets, baskets full of flowers and a promenade fit for a king. Silloth is so therapeutic that King George VI wanted to recuperate here during his reign. The promenade is the perfect place to stretch your legs; bracing air and a long well kept green right to the seafront - no wonder so many choose to retire here.

On the way or on your return journey you should call in to **Bank Mill**. Sitting adjacent to a 'Site of Special Scientific Interest', the garden nursery has expanded over the years and now boasts a tropical butterfly and reptile house that received thousands of visitors when it opened last year. They love to wander amongst the flutter of butterflies and watch new ones emerging from their chrysalis.



Bank Mill is also home to one of the rarest of animals - an albino African pygmy hedgehog, born this spring he has his own house next door to the reptiles and butterflies! Outdoors the growing nature reserve has a variety of animals from endangered species like natterjack toads and skylarks to rare wild fowl. The café was also extended last year to cope with the growing demand for delicious home cooked hot and cold lunches and cakes. Perfect for morning coffee, lunch or an afternoon cream tea on the way home.

Coach parties are welcome and special offers are available.  
[www.bankmillnurseries.co.uk](http://www.bankmillnurseries.co.uk)  
t: 01900 881 340.



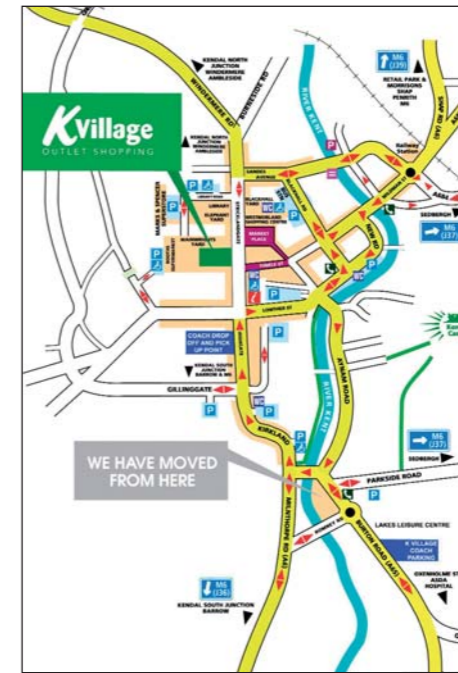
Coach parties looking for a different, relaxed day out, should take a trip down memory lane to the Aquarium at Maryport, Bank Mill at Beckfoot and Silloth on the Solway Coast.



## K Village Outlet Centre Relocation

K Village continues to offer the best brands at even better prices, with discounts of up to 60% off recommended retail price every day. The centre, including the famous Clarks Factory Shop, has temporarily relocated to Kendal high street during 2007/8 whilst the exciting new riverside redevelopment of K Village is underway. Coaches must book in for their visit and they can then drop off in Stricklandgate, close to K Village, receive incentive vouchers for their passengers and park up at Lakes Leisure, Burton Rd, Kendal.

For up-to-date information, see [www.kvillage.co.uk](http://www.kvillage.co.uk). Full details are available from Joyce Chisholm on 01539 732363



## Haughton Hall

A World in Miniature Museum, Houghton Hall, Carlisle.

"An amazing experience for collectors and the curious alike"

A brand new visitor attraction has just opened in north Cumbria. Its one of the top three collections of miniatures in the world; not just an example of dolls house furniture, but a fabulous display of craftsmanship, with breathtaking detail in every article, from the simplest utensil to reproductions of famous pieces of antique furniture.

With over 50 complete room sets from different historical periods, this is a chance to see the exacting work undertaken in reproducing every single thing in the museum down to a 1:12 scale in meticulous and stunning detail. You can also see the world's smallest teddy bear and a collection of miniature needlework.

A World in Miniature is housed on the lower ground floor of one of Cumbria's newest visitor attractions, Houghton Hall Garden Centre. This huge complex is clearly visible from the M6 motorway and is just over a mile from junction 44, on the A689. Houghton Hall has a really good name for its superb food, locally purchased and all cooked on the premises. The delicious baking

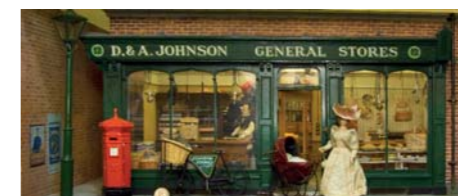


is all done in house and there is a selection of both hot and cold meals which changes daily.

With a huge gift shop, clothing department, Craft Central, Hornby and Scalextric, Dolls House Emporium, Hot Springs, garden furniture, Farm Shop and of course a huge selection of plants and everything you could need for the garden, Houghton Hall is a 'one stop' destination for day trips, but is within easy reach of other well known visitor attractions in Cumbria. Our toilet facilities are positively luxurious!!

Group discounts for A World in Miniature available as well as tickets inclusive of meal packages.

For details ring 01228 400388, e-mail [info@aworldinminiature.com](mailto:info@aworldinminiature.com) or visit [www.aworldinminiature.com](http://www.aworldinminiature.com)



## News update

**Rydal Mount and Gardens, near Ambleside New for 2007!**

Cream teas for groups in a marquee in Rydal Mount garden. Homemade organic scones with strawberry jam and clotted cream. 25 persons max.

Tel: 015394 33002 [www.rydalmount.co.uk](http://www.rydalmount.co.uk)

**Lindeth Howe Hotel, Bowness-on-Windermere**

Special offer for groups: Beatrix Potter 3 Course Peter Rabbit Lunch - £12.50 including tea/coffee. Afternoon tea - from £4.50 per person. Maximum group size: 30 persons.

Tel: 015394 45759 [www.lindeth-howe.co.uk](http://www.lindeth-howe.co.uk)

**Aquarium of the Lakes, Lakeside. Great group days out!**

A one-stop booking service for tours. Combine your visit to the Aquarium of the Lakes with a Windermere Lake Cruise, a trip on the Lakeside & Haverthwaite Steam Railway or a trip to the World of Beatrix Potter Attraction in Bowness.

**Lakeside Spectacular (available Apr - Oct)**

This tour includes a trip on the Lakeside & Haverthwaite Steam Railway, a visit to the Aquarium of the Lakes and a single 40 minutes cruise on Lake Windermere with Windermere Lake Cruises.

**Lakeland Medley**

This tour includes a visit to the World of Beatrix Potter Attraction at Bowness-on-Windermere, a single 40 minute cruise on Lake Windermere with Windermere Lake Cruises and a visit to the Aquarium of the Lakes.

Group rates available to pre-booked groups with 48 hours prior notice. Booking is easy - just make one call to 015395 30153 (x 207) and your day will be arranged for you.

[www.great-4-groups.co.uk](http://www.great-4-groups.co.uk)

**High Passes Spectacular - 'The High Adventure'**

For many groups and coach parties visiting the Lake District we are asked to provide "off the beaten track" sightseeing tours to access some of the area's most spectacular scenery much of which is not possible by larger coaches. The High Passes Spectacular, Mountain Goat's most famous tour offers a fantastic day into the heart of the Lake District. In brief, the tour includes:

- Hardknott and Wrynose Passes
- Ravenglass & Eskdale Steam Railway
- Muncaster Castle
- World Owl Trust
- Hardknott Roman Fort
- Wastwater & Wasdale
- Coniston & Coniston Water

This tour operates from February to November (inclusive). Special group rates and discounts available. Complimentary hotel pick-up service.

Contact: Graham Wilkinson or Sue Todd for more details Tel 015394 45161 [www.mountain-goat.com](http://www.mountain-goat.com)

## Millom RAF Museum

-Packed full of history



RAF Millom covers the aviation and military history of the North West which includes Lancashire, Cumbria, Merseyside, Greater Manchester, North Cheshire, North Wales and the Peak District and it is now established as the leading independently funded collection in the North West.

It's a full day at RAF Millom

With tens of thousands of artefacts, displays, photographs and interactive historical items housed in themed display zones, buildings and courtyards you can fill the whole day by exploring our maze of carefully presented exhibits. With one

of the largest collections to be found anywhere in the UK, RAF Millom draws day visitors from all over the country, attracted by the unique displays of items of historical significance.

**Hands on displays**

See for yourself the weapons, uniforms, medals, vehicles and personal items that were a way of life for soldiers and civilians alike. Many of our exhibits are on open display and not inside glass cabinets so you can touch and feel them.

**A lot to see**

In the collection of the museum you will find:-

- An archive of over 4,000 photographs from the wartime era when the North West was a busy training and maintenance area, including a large number of personal collections of memorabilia.
- Histories of the airfields in the North West and aircraft crash sites.
- Specialist collections on the Dominican, Polish and Czech aircrews who served in the RAF.
- Several aero engines including RR Merlin, Kestrel, Avon and Griffon, Bristol Hercules, Junkers Jumo, and more.
- Airframes and cockpits including Vampires, Tornado, Whirlwind and Fleas.

- A Home Front display complete with Anderson shelter.
- The National Collection of the Mountain Rescue Service.
- A large military collection with a special emphasis on the Cold Stream Guards, this also includes a collection of wartime firearms.
- An extensive WW1 display.

**Refreshments and souvenirs**

A small shop is located at the museum for teas, coffees and souvenirs and there are also a number of cafés and other refreshment stops in the surrounding towns and villages.

